

fashionLedge

HARLEM WORLD

Hamilton Heights • Sugar Hill • East Harlem • Central Harlem • Morningside Heights • Washington Heights • Columbia Heights
www.harlemworldmag.com • #9 October/November 2005

REAL ESTATE GUIDE
SERVICES, LAWYERS
BROKERS, AGENTS...

It Takes a Village

HARLEM'S PROPERTIES ARE HOT JUST ASK
MAYA ANGELOU, MARCIA GAY HARDEN, KAREEM ABDUL-JABBAR TO NAME A FEW

BILL BELLAMY
TAKING OFF AT THE APOLLO

STACIE J
HARLEM'S APPRENTICE 2

FASHION WEEK '05
FROM DOWNTOWN TO UPTOWN,...

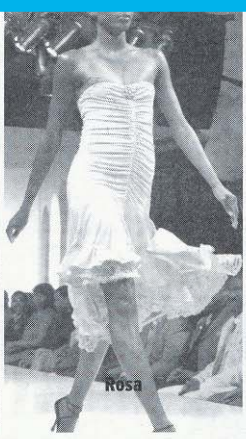
HARLEM PARK THE NEW HARLEMPARK MARRIOTT



The Children's Place



Multi by Bree



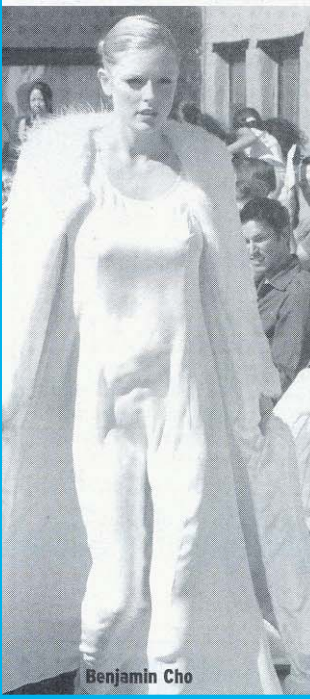
Rosa



David Rodriguez

Fashion Week '05 color, shape, and originality

Not surprisingly, the Spring 2005 collections were as varied as the designers that drew them up. *Multi* by designer Bree, entitled "Colored Lenses" focused on the rich colors that she has seen in her travels. Trans-seasonal fabric thematically pieced the line together and its main tenet was that the clothes could be worn from morning to night with little alteration and no ironing. Benjamin Cho had more socially-conscious themes in mind: a faux-fur Spring line sanctioned by The Humane Society (HSUS) which incorporated Glenoit's faux fur—talk about creative! The kids were not forgotten as *The Children's Place* showed its playful line, which included a play area as part of the runway. And what is 'Fashion Week' without the glitz and glamour of celebrities? As usual, Wyclef Jean performed during his wife Marie Claudinette Pierre Jean's *Fusha* show. Sean "P. Diddy" Combs, Damon Dash, Mayor Bloomberg, the Bush sisters (they caused quite a stir, election season and all) and Paula Abdul, who promoted her tagless bra were just a small fraction of the celebrity mayhem that descended on Bryant Park during Fashion Week. Overall, this season was clearly about colors, about vividness, and clothing that spoke, through the conduit of the body, about essence. There was more substance and a drive by designers to perfectly match the contours of the human body in an attempt to create uniqueness. Therefore, there were also some lines, like Yeohlee, that found new unique venues such as the 42nd Street subway to showcase their line. And models relished this new attention to detail and shape. One could sense that Naomi or Omahyra were at peace with their outfits and this delight often found its way into exuberant cheering. Until next time, straddle the ledge. — By Kenyatta D. Pious www.FashionLedge.com



Benjamin Cho



Mathew Williamson



Carolina Herrera



Heatherette